

## Short Report



## Hotel "Schneider am Maar"

Maarstr. 22  
54552 Schalkenmehren

Tel: +49 6592 95510  
Fax: +49 6592 955140

info@hotelschneider.de  
<https://hotelschneider.de/>

### Welcome!

Our Eifel hiking hotel directly at the Schalkenmehrener Maar, offers the perfect combination of well-being, wellness and active vacation. Already our parents and their parents and also their parents...have lost their heart to the hospitality industry! It is no different with us. Since 1868 we pursue the passion to make our home your home. We want you to feel comfortable with us and to come back again. ...and then there is the love for our home – the beautiful Eifel with its volcanic landscape. We want you to spend a wonderful time with us!

# TEST RESULT

---

for

## Hotel Schneider am Maar

54552 Schalkenmehren, Certificate-ID: PA-00269-2025



This offer was classified according to  
the criteria of the nationwide label

**»Tourism for All«**

and, in the period from

**December 2025 – November 2028**

is entitled to use the label

**»Accessibility checked«**

and the associated pictograms  
in accordance with the contract.

## Overview

- Regional brand EIFEL – regional produce sourcing
- Eifel cuisine
- Vegetarian/vegan possible
- Large sun terrace
- Traditional house run by the sixth generation

## Accessibility at a glance

- Parking space for people with disabilities
- A room that is accessible
- Building accessible without steps
- All rooms and facilities that can be used by guests are accessible without steps or via a ramp
- 80 cm minimum width of all passageways/doors
- Toilet for people with disabilities
- Large shower without thresholds
- Shower chair or seat available
- Assistance dogs welcome

# Information for people with walking difficulties and wheelchair users

All areas relevant for testing meet the quality criteria of the label "**Accessibility certified – partially accessible for people with walking disabilities and wheelchair users**".

Some **information on accessibility** are listed below. For detailed information please see the evaluation report.

- There is a parking space for people with disabilities.
- The bus stop Kirche is 180 meters away.
- All rooms and facilities that are accessible to guests are step-free/at ground level or accessible via a ramp.
- There are no slopes with a gradient of more than 15%.
- All doors/passages and paths that are accessible to guests are at least 80 cm wide.
- The reception desk is 78 cm high.
- There is one accessible room available.
- The toilet in the room is accessible from one side (at least 80 cm). There is a foldable grab rail on the accessible side of the toilet.
- The sink is wheelchair compatible and the mirror is also visible while seated.
- The shower is accessible without a threshold. A grab rail and a shower chair are available.
- The dining room has tables that are max. 80 cm high and wheelchair accessible at a height of 67 cm and a depth of 30 cm.
- The work surface in the kitchen, the sink, and the stove are not wheelchair compatible.
- The dining table/table is partially wheelchair compatible.
- There is a public toilet for people with disabilities, which is accessible from both sides (at least 80 cm). There are folding grab rails to the left and right of the toilet.

# Information for people with hearing impairments and deaf people

Some **information on accessibility** are listed below. For detailed information please see the evaluation report.

- There is no clearly visible alarm.
- There is no audio induction loop system.
- In the gastronomy there are tables with bright and glare-free lighting, on which there are no lamps standing or hanging that interfere with the field of vision or eye contact.

- There is at least one electrical outlet available near the bed.
- The ringing or knocking on the door is not indicated by a flashing signal which can be detected in all rooms.
- WiFi is offered.

## Information for visually impaired and blind people

Some **information on accessibility** are listed below. For detailed information please see the evaluation report.

- Assistance dogs are welcome.
- The entrance area is designed with high visual contrast.
- The signage (for orientation) is designed in easily legible, high-contrast font.
- All elevated areas accessible to guests are brightly lit without glare.
- The font used on the menu is simple and designed with high visual contrast.
- Information is not available in relief or Braille.

## Information for guests with cognitive impairments

Some **information on accessibility** are listed below. For detailed information please see the evaluation report.

- The name of the hotel is clearly recognizable from the outside.
- There is no colored or pictorial guidance system available.
- There is no information in easy language.

# Image Gallery

We have put together some photos from the company / offer for you. You can find more photos in the detailed reports.

---



General parking at the Maarstraße

??Julia Marmulla



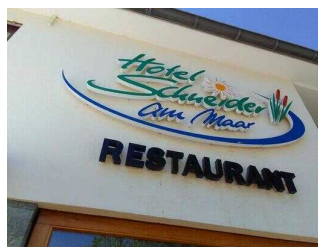
Parking lot at the outbuilding

©Julia Marmulla



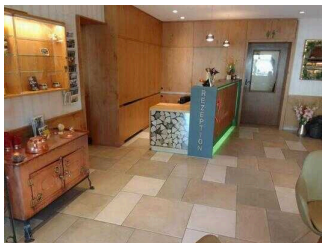
Entrance to the main house

(c)Julia Marmulla



Reception in the main house

(c)Julia Marmulla



Reception in the main house

(c)Julia Marmulla



Guest rooms in the main house

©Julia Marmulla



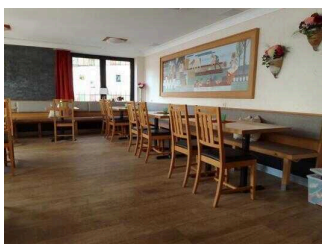
Guest rooms in the main house

©Julia Marmulla



Guest rooms in the main house

©Julia Marmulla



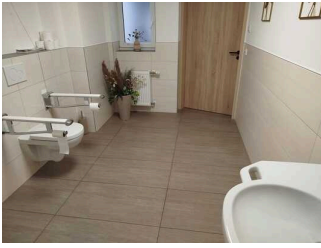
Guest rooms in the main house

(c)Julia Marmulla



WC in the main house

©Julia Marmulla



WC in the main house

©Julia Marmulla



Room 31 in the annex

(c)Julia Marmulla



Room 31 in the annex

(c)Julia Marmulla

## Information on the "Tourism for All" labeling system

All establishments and locations certified with the label "Tourism for All" meet the following quality criteria:

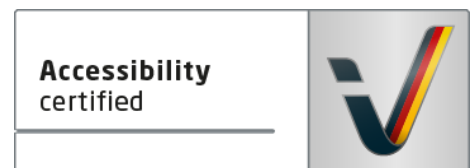
- Data and information on accessibility are collected and checked on site by **external, specially trained evaluators**. The method is not based on self-assessments.
- Data on accessibility is available **in detail** and can be viewed by the guests.
- At least one staff member has successfully passed a **training** on "**Accessibility as a comfort and quality feature**".

### The labeling – explanation of the logos and pictograms

The label "**Information about Accessibility**" indicates that detailed and verified information on accessibility is available for all groups of people.



The label "**Accessibility certified**" is based on "Information about Accessibility". It means that the quality criteria defined for specific groups of people are met partially or completely.



The label "**Accessibility certified**" is available in two requirement levels:

#### "Accessibility certified: partially accessible".

The quality criteria are partially fulfilled for the pictured group of people, i.e. the establishment/location is partially accessible for wheelchair users. The "i" in the pictogram indicates that it is recommended to read again carefully whether the offer meets all (your oder the guest's) individual requirements.



#### "Accessibility certified: accessible".

The quality criteria are fulfilled for the pictured group of people, i.e. the establishment/location is accessible for wheelchair users.



There are defined quality criteria for **seven groups of people** and a **specific pictogram** for each group.

People with walking disabilities



Wheelchair users



People with hearing impairment



Deaf people



People with visual impairments



Blind people



People with cognitive impairments

